



The **PETKUS Buffer Silo** is a modern and efficient silo system which is used as a dosing, mixing and buffer cell for granular, free flowing products.

Advantages:

- Compact and closed modular style using completely bolted technology
- Suitable for indoor and outdoor installation
- High corrosion protection due to the galvanized design

Description:

Due to the modular design of the square silo different heights and capacities are possible. The square silo consists of ring elements with a length of 2 000 mm, 2 500 mm or 3 000 mm. The maximum height is 6 m (10 ring elements), for 3 000 mm only 4.2 m. The silo dimensions can be designed individually due to the modular design.

Construction:

The silo consists of ring elements which are screwed together. Every silo is equipped with a screw secured outlet hopper which is attached on supports with the corresponding height.

Standard Equipment:

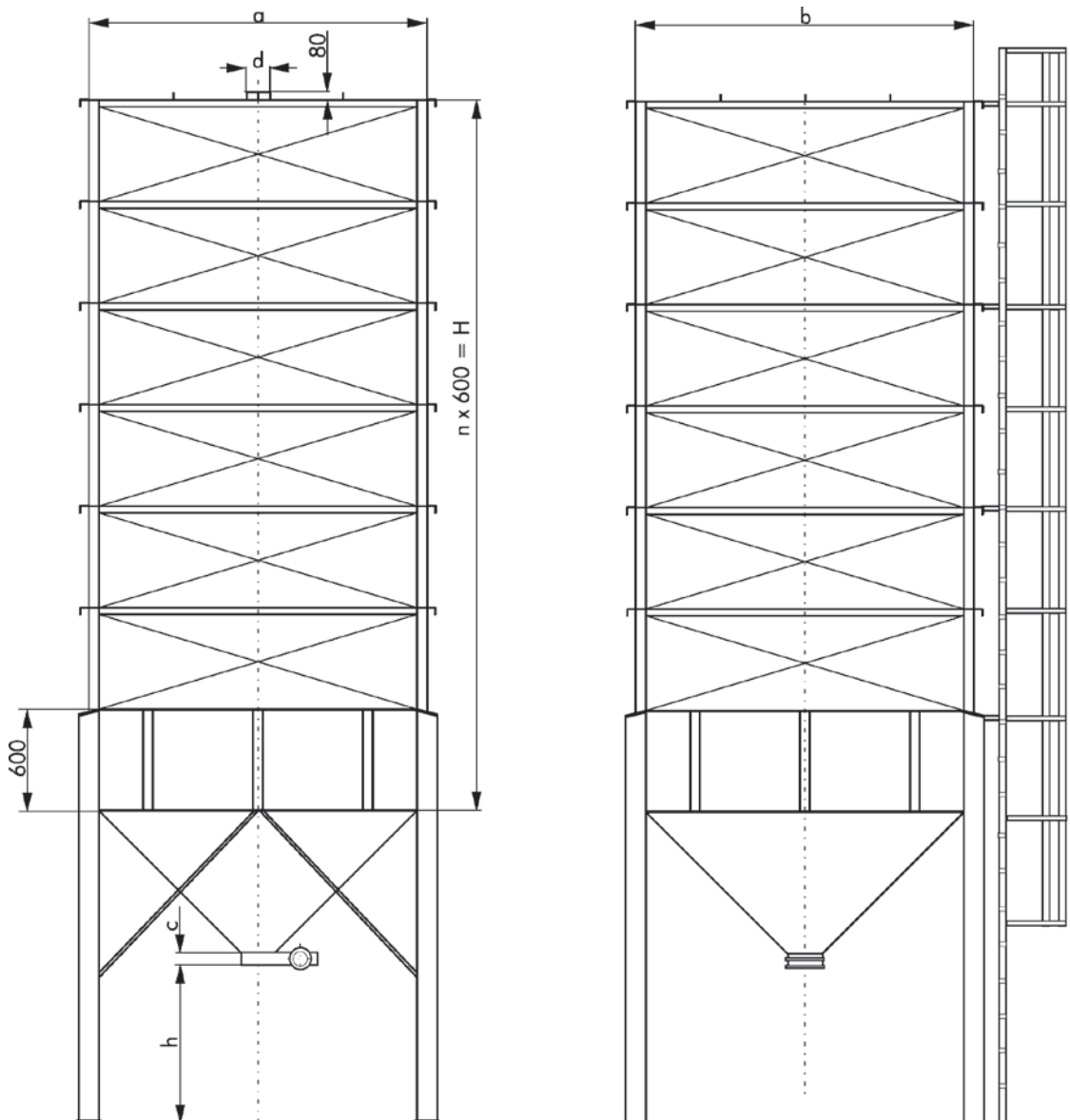
- Model in galvanized sheet steel
- Ring elements with a length of 2000 mm, 2500 mm or 3000 mm
- Silo roof
- Outlet hopper with corresponding height
- Substructure and supports

Options:

- Model in stainless steel
- Model in a cathodic dip painting
- Level indicator for Full / Empty message
- Outlet slide
- Outlet swiveling slide for not free flowing products
- Screw discharge for not free flowing products
- Ladder
- Outdoor installation with a sloped roof and a stronger retaining structure
- With railing on the silo roof

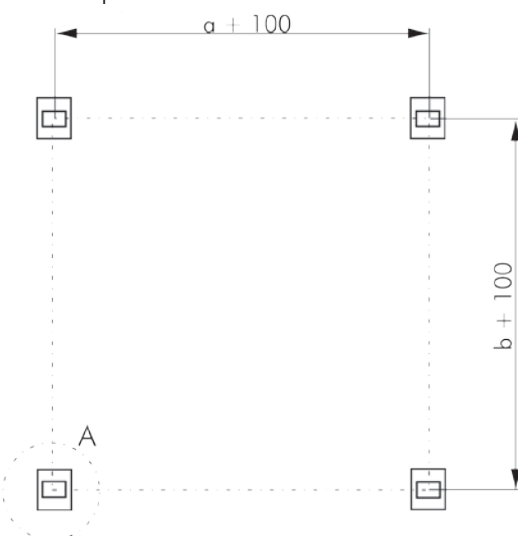
Buffer Silo	Silo (a x b) 2 x 2 m m ³	Silo 2.5 x 2.5 m m ³	Silo 3 x 3 m m ³
10 Section height (H) = 6 000 mm	24.00	37.50	on request
9 Section height (H) = 5 400 mm	21.60	33.75	on request
8 Section height (H) = 4 800 mm	19.20	30.00	on request
7 Section height (H) = 4 200 mm	16.80	26.25	37.80
6 Section height (H) = 3 600 mm	14.40	22.50	32.40
5 Section height (H) = 3 000 mm	12.00	18.75	27.00
4 Section height (H) = 2 400 mm	9.60	15.00	21.60
3 Section height (H) = 1 800 mm	7.20	11.25	16.20

Buffer Silo Type VS



c = 105 mm at outlet slide

Foundation plan:



Technical Alteration reserved.