

- |  |   |
|--|---|
| 1 - Machine inlet                      | 6 - Screen layer 3 - lower screen shoe                  |
| 2 - Pre-sifting channel                | 7 - Screen layer 4 - lower screen shoe                  |
| 3 - Screen cleaning system             | 8 - Expansion chamber for pre- and main sifting channel |
| 4 - Screen layer 1 - upper screen shoe | 9 - Main sifting channel                                |
| 5 - Screen layer 2 - upper screen shoe |   |

The purpose of the **PETKUS U-Cleaner** is the high-quality cleaning of grain, pulses, oilseeds and other free flowing products. The cleaner can be used for pre-, intensive and seed cleaning. The high standard of cleaning is achieved by a combination of the screening process and the air aspiration system.

#### Advantages:

- Very high flexibility due to extensive setting options using product diverters and chutes
- High standard of cleaning and quality
- Simple and quick changing for various applications due to the modular design
- Highly effective cleaning of the screen surface by means of a ball cleaning system, and scraper chain, thus achieving a reduction of the overall machine length
- Also suitable for not free flowing products and sections with high debris

#### Description:

The product to be cleaned is evenly distributed and fed into the cleaner by an inlet hopper. The product is moved from the inlet hopper into the pre-aspiration. Light rejects, husk and dust are separated here.

Afterwards, the product is transported into the top screen compartment with the two screen layers. The first screen layer is used for separating the coarse rejects. The second screen layer can either be used for separating coarse or light rejects depending on the desired mode of cleaning. The two screen layers in the bottom screen compartment can be used for separating coarse and light rejects or for calibrating the product by using the product diverters and chutes, depending on the mode of cleaning.

The screened product is moved into the final aspiration. The product is sorted by its bulk density and light rejects such as hollow grains, foreign particles and dust are separated here.

All screens are cleaned with balls which are placed under the screens. The first screen layer in the top screen compartment is additionally equipped with a scraper chain.

#### Construction:

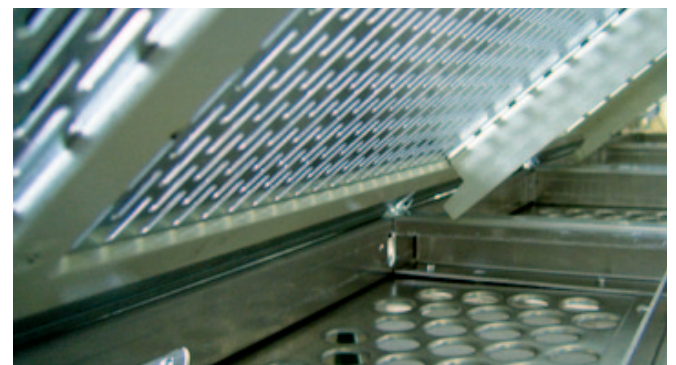
The U-Cleaner is equipped with an inlet hopper, one pre-aspiration and one final aspiration with a depositing chamber as well as two screen compartments with two screen layers vibrating in opposite directions. The various components of the machine (inlet hopper, discharge auger/ etc.) are operated by drive motors.

#### Standard Equipment:

- Bolted frame made of painted sheet steel
- Screen compartments, pre-aspiration and final aspiration made of galvanized sheet steel
- Set of screens for screening diagram
- Drive units with gear motors

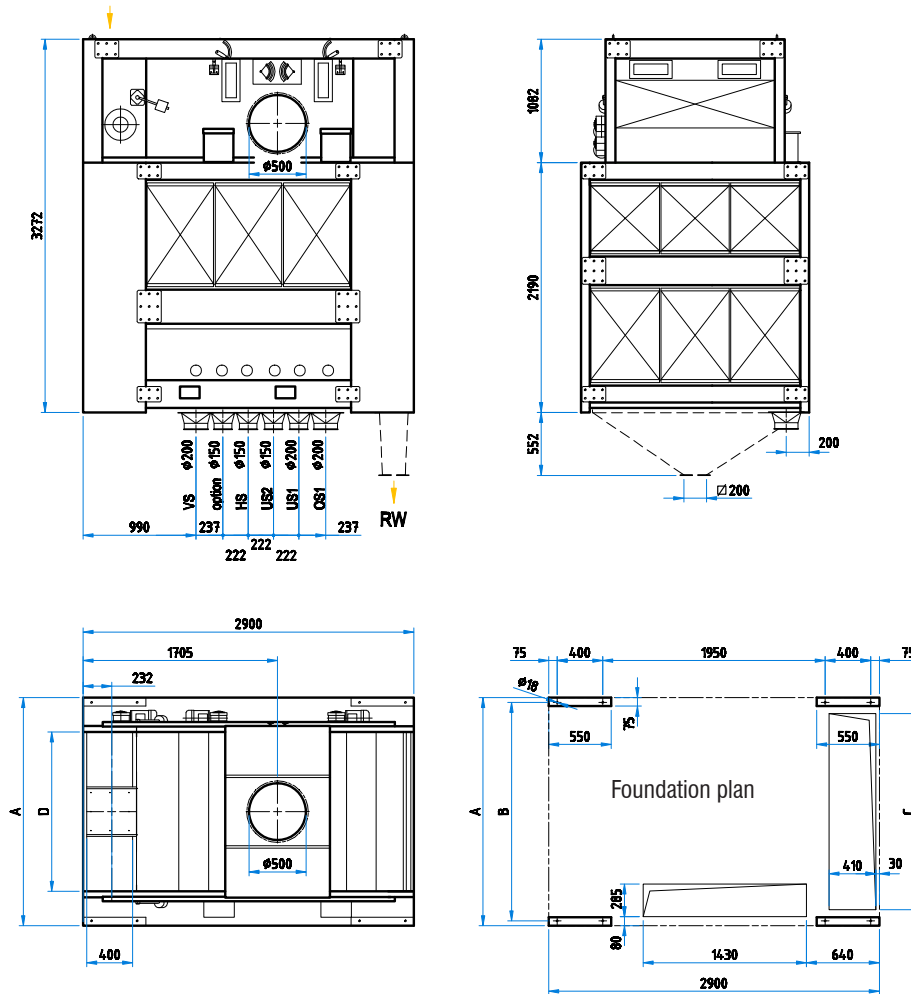
#### Options:

- Conversion kits (screens and accessories) for various screening diagrams
- Scraper chain
- Vibrating infeed
- Discharge left



Screensegment within exchangeable screen frame

# Universal Cleaner U 12 / U 15



Technical Data		U 12	U 15
Capacity (Basis: wheat)			
Pre-cleaning	bu/hr	2 200	3 000
Seed cleaning	bu/hr	300	360
Industrial cleaning	bu/hr	1 100	1 500
Drives			
Fan	hp	15.0-20.0	20.0-24.0
Screen shoe	hp	5.5	5.5
Machine inlet drum	hp	0.5	0.5
Discharge screw	hp	2 x 0.5	2 x 0.5
Cleaning device upper screen	hp	0.5	0.5
Air volume (wheat)	cfm	5 301	7 068
Working width	in	47.25	59
Screen surface	in <sup>2</sup>	10 416	13 020

Technical Data		U 12	U 15
No. of screen layers			
Upper screen shoe	pcs.	2	2
Lower screen shoe	pcs.	2	2
No. of screen segments			
Upper screen shoe	pcs.	2 x 8	2 x 10
Lower screen shoe	pcs.	2 x 8	2 x 10
Total No. of screen segments	pcs.	32	40
Dimensions:			
A	in	67	78.75
B	in	64	76
C	in	56	67.75
D	in	43	54.75
Speed	rpm	320	320
Load, horizontal (FH)	lb <sub>f</sub>	± 315	± 405
Load, vertical (FV)	lb <sub>f</sub>	1 461 ± 764	1 798 ± 967
Weight	lb	5 291	6 614

Technical alteration reserved.